

State of Wyoming Corner Record

(in compliance with the CORNER PERPETUATION AND FILING ACT, Wyoming Statutes, 1977, Section 36-11-101, et. seq., and the Rules and Regulations of the Board of Registration for Professional Engineers and Professional Land Surveyors)

Reverse side of this form may be used if more space is needed.

Record of original survey and citation of source of historical information (if corner is lost or obliterated). Description of corner monumentation evidence found and/or monument and accessories established to perpetuate the location of this corner. Sketch of relative location of monument, accessories, and reference points with course and distance to adjacent corner(s) (if determined in this survey). Method and rationale for reestablishment of lost or obliterated corner.

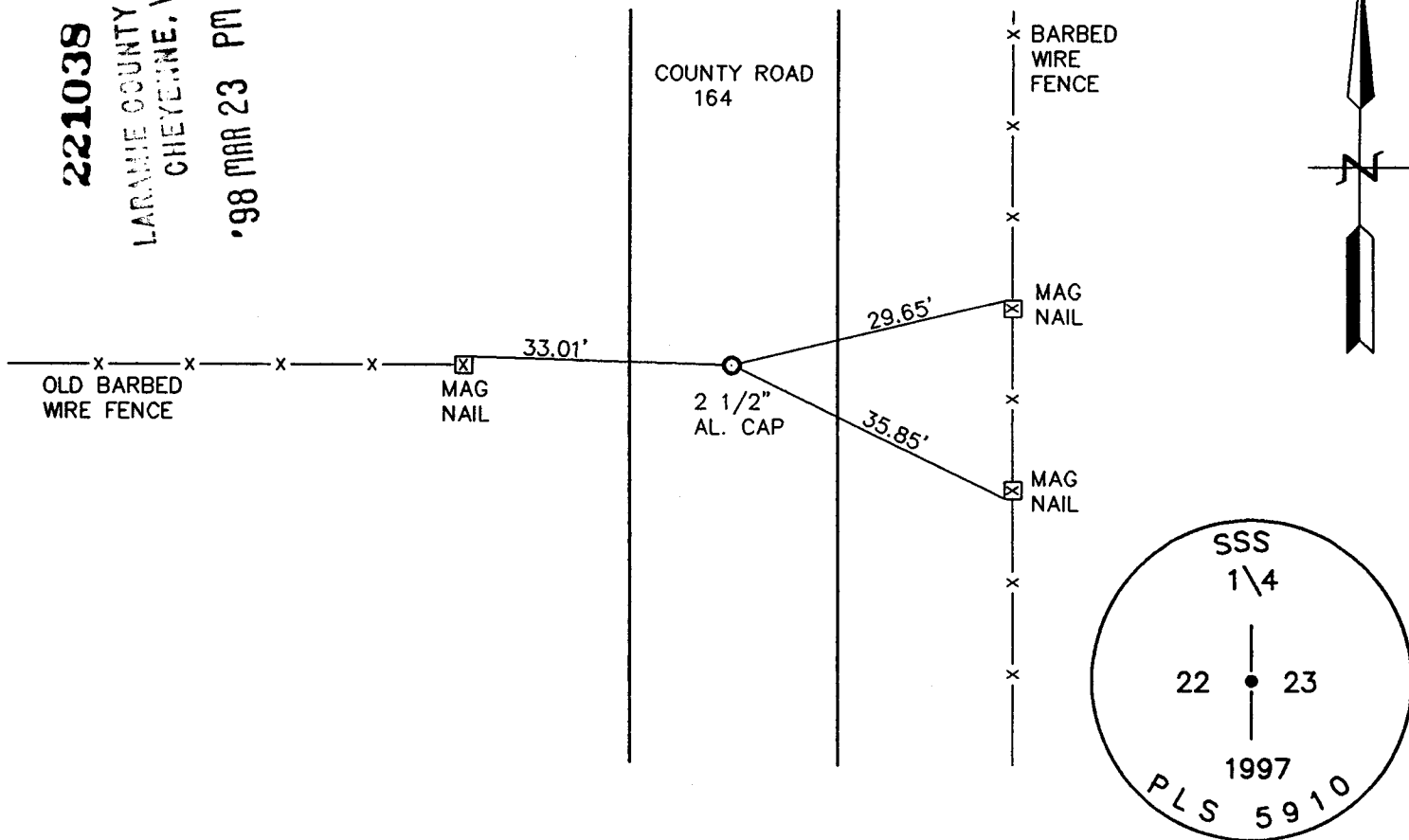
GLO RECORD: UNKNOWN.

MONUMENT FOUND: NOTHING FOUND.

MONUMENT SET: SET A 5/8" X 24" REBAR WITH 2 1/2" ALUMINUM CAP IN THE CENTERLINE OF COUNTY ROAD 164 AND IN LINE WITH A OLD FENCELINE TO THE WEST. CAP STAMPED AS SHOWN BELOW.

REFERENCES: MONUMENT LIES IN THE CENTERLINE OF COUNTY ROADS 224 AND 164. SET MAG NAILS FOR REFERENCE.

221038
 LARAMIE COUNTY CLERK
 CHEYENNE, WY.
 '98 MAR 23 PM 1 32



Date of Field Work: 10-11-97 Office Reference: 97241

CROSS INDEX DIAGRAM

A	2	3	4	5	6	7	8	9	10	11	12	13	14	15	16	17	18	19	20	21	22	23	24	25
B																								
C	6		5			4				3					2						1			
D																								
E																								
F																								
G	7		8			9				10					11						12			
H																								
J																								
K																								
L	18		17			16				15					14						13			
M																								
N																								
O																								
P	19		20			21				22					23						24			
Q																								
R																								
S																								
T	30		29			28				27					26						25			
U																								
V																								
W																								
X	31		32			33				34					35						36			
Y																								
Z																								

Firm/Agency, Address

STEEL SURVEYING SERVICES, LLC.
1102 WEST 19th STREET
CHEYENNE WY 82001

Telephone Number: **(307) 634-7273**

This corner record was prepared by me or under my direction and supervision.
 SEAL & SIGNATURE



BOOK 1476

Corner Name: EAST 1/4 Section: 22 T. 16N R. 60W; 6th P.M. Cross-Index No.: P-17
 SBRPEPLS/PLSW: March 1994